



SPECTRA CL Colour Product Inspection



The colour product inspection system **SPECTRA CL** is used to detect cross-contamination and other errors such as size, position as well as broken products and overfilling. It is the ideal solution for common inspection tasks.

PRODUCT HIGHLIGHTS

Live

data export

20 fps

inspection
speed



LDAP or
OPC UA

Any questions?



+49 6257 9352 0



info@scanware.de

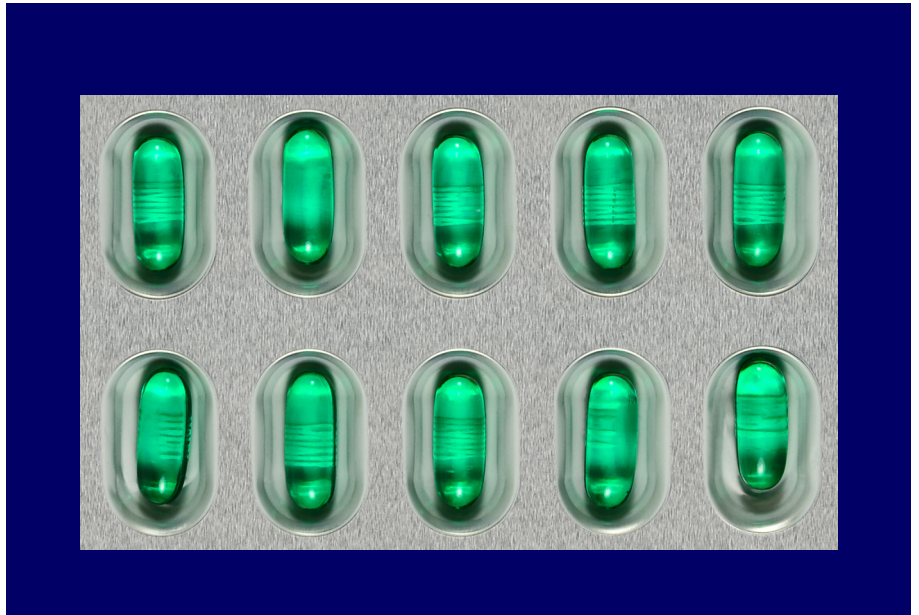


scanware.de



DESCRIPTION

- Criteria: Colour, presence, size, shape, perimeter, position, broken products, overfilling, consecutive errors
- The system is fully compliant to 21 CFR Part 11
- scanware framegrabber for extra-fast evaluation
- Homogenous, reproducible and adjustable illumination – 16 levels available
- Real-time operating system QNX®
- Soft- and hardware can be upgraded to SPECTRA HR if requirements change
- Also available in black & white for simpler inspection tasks e.g. mono lines
- Multitude of features depending on chosen software package



APPLICABLE OBJECTS



Tablet



Soft gel capsule



Hard gel capsule



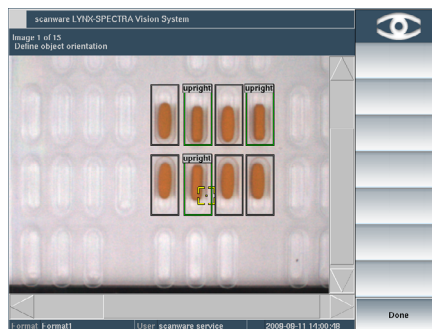
Oblong



Sugar-coated tablet

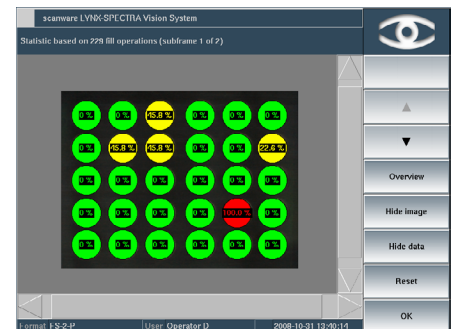
ON SITE

The software offers a number of features to optimise production on site: automatic teach-in and format test for quick start of production and adjusting to new batches. A number of features allow precise fine-tuning to the challenges of your product types. Finally, statistical features allow you to analyse product and the filling process.



GUI of software feature: Detection of upright objects

Using this feature enables you to minimise rejection of objects that are correct, but sat upright, without increasing tolerances



GUI of software feature: Pocket statistics

This feature allows you to assess your filling for consecutive errors and carry the gained knowledge over to your filling machinery

SCANWARE HIGHLIGHTS



Highest security & failure-safety



Partnership & Trust



In-house development



Customisable to optimise productivity



User-friendly & intuitive

